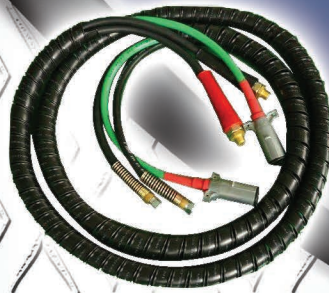
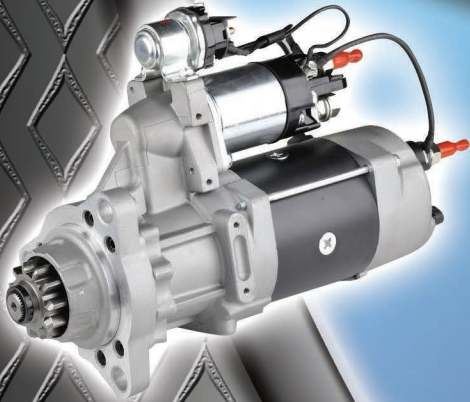


**FORTPRO**<sup>®</sup>  
USA

# Electrical Components



## ELECTRICAL COMPONENTS

### Starter 39MT



**FortproUSA#:** F235413

**Replaces:** 8200308

**Notes:** 39MT, 12 Volt, 11 teeth rotatable (OCP&IMS)

### Starter 39MT

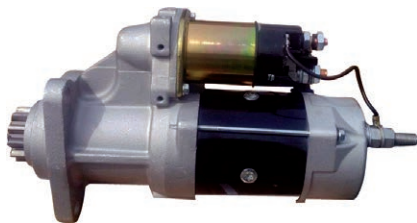


**FortproUSA#:** F235412

**Replaces:** 19011531

**Notes:** 39MT, 12 Volt, 11 teeth solenoid positioned at 52 degrees

### Starter 39MT



**FortproUSA#:** F235411

**Replaces:** 19011516

**Notes:** 39MT, 12 Volt, 11 teeth solenoid positioned at 82 degrees

### Starter 39MT



**FortproUSA#:** F235414

**Replaces:** 8200330

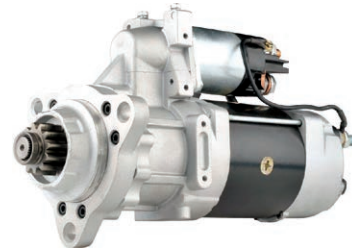
**Notes:** 39MT, 24 Volt, 11 teeth rotatable (OCP&IMS)



## ELECTRICAL COMPONENTS

### Starter 39MT

**FortproUSA#:** F235415  
**Replaces:** 8200214, 8200691,  
21019460, 8300060  
**Notes:** 39MT, 12 volt, 12 teeth  
rotatable (OCP&IMS)  
**Replaces:** 37MT 1993874



### Starter 42MT

**FortproUSA#:** F235406  
**Replaces:** 1990483, 8M54239M, 8MJ4267M  
**Notes:** 42MT, 12 volt, 11 teeth solenoid  
positioned at 82 degrees



### Starter 42MT

**FortproUSA#:** F235409  
**Replaces:** 1990456  
**Notes:** 42MT, 24 volt, 11 teeth



### Starter 40MT

**FortproUSA#:** F235407  
**Replaces:** 10461045, 1114098, 8MJ498P3  
**Notes:** 40MT, 12 volt, 11 teeth solenoid p  
positioned at 52 degrees



## ELECTRICAL COMPONENTS

### Starter 50MT



FortproUSA#: **F235418**

Replaces: 10479339

Notes: 50MT, 24 volt, 11 teeth  
Solenoid Part No. F235419  
Replaces: 1115559

### Solenoid 42MT



FortproUSA#: **F235386**

Replaces: 1115593

Notes: 42MT, 12 volt

### Solenoid 42MT



FortproUSA#: **F235384**

Replaces: 1115595

Notes: 42MT, 24 volt

### Solenoid 39MT



FortproUSA#: **F235385**

Replaces: 10511408

Notes: 39MT, 12 volt



## ELECTRICAL COMPONENTS

### Solenoid 39MT

<b>FortproUSA#:</b> F235421
<b>Replaces:</b> 10511409
<b>Notes:</b> 39MT, 24 volt



### Solenoid Switch 39MT



<b>FortproUSA#:</b> F235387
<b>Replaces:</b> 10511414
<b>Notes:</b> 39MT, 12 volt

### Solenoid Switch 39MT



<b>FortproUSA#:</b> F235422
<b>Replaces:</b> 10511415
<b>Notes:</b> 39MT, 24 volt

### Plunger Assembly



<b>FortproUSA#:</b> F235383
<b>Replaces:</b> 1988775
<b>Notes:</b> 37 - 42MT

### Starter Repair Kit 42MT

<b>FortproUSA#:</b> F235423
<b>Replaces:</b> 1989497
<b>Notes:</b> 42MT, 12 volt

<b>FortproUSA#:</b> F235423-24
<b>Replaces:</b> 1989496
<b>Notes:</b> 42MT, 24 volt



### Starter Repair Kit 39MT

<b>FortproUSA#:</b> F235424
<b>Replaces:</b> N/A
<b>Notes:</b> 39MT, 12 volt & 24 volt



## ELECTRICAL COMPONENTS

### Alternator 22SI



**FortproUSA#:** F235401

**Replaces:** 19020309, 19020302, 19020310

**Notes:** 22SI, 12 volt, 145 Amp, J mount

### Alternator 22SI



**FortproUSA#:** F235403

**Replaces:** 19020389, 19020388, 10459321

**Notes:** 22SI, 12 volt, 145 Amp, PAD mount

### Alternator 21SI



**FortproUSA#:** F235394

**Replaces:** 19010168, 19010126

**Notes:** 21SI, 12 volt, 145-160 Amp, J mount

### Alternator 21SI



**FortproUSA#:** F235395

**Replaces:** 1117900

**Notes:** 21SI, 24 volt, 70 Amp, J mount



## ELECTRICAL COMPONENTS

### Alternator 24SI

**FortproUSA#:** F235398  
**Replaces:** 8600310  
**Notes:** 24SI, 12 volt, 160 Amp, J mount



### Alternator 24SI

**FortproUSA#:** F235399  
**Replaces:** 8600889  
**Notes:** 24SI, 12 volt, 160 Amp, PAD mount



### Alternator 35SI

**FortproUSA#:** F235396  
**Replaces:** 8600064  
**Notes:** 35SI HP, 12 volt, 140 Amp, J mount



### Alternator 35SI

**FortproUSA#:** F235397  
**Replaces:** 8600066  
**Notes:** 35SI HP, 12 volt, 140 Amp, PAD mount



## ELECTRICAL COMPONENTS

### Alternator 28SI



**FortproUSA#:** F235400

**Replaces:** 8600313

**Notes:** 28SI (12V) 200A J Mount

### Alternator 28SI

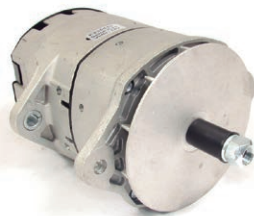


**FortproUSA#:** F235405

**Replaces:** 8600314

**Notes:** 28SI (12V) 200A PAD Mount

### Alternator 36SI

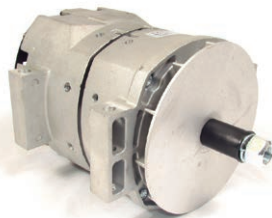


**FortproUSA#:** F235410

**Replaces:** 8600126

**Notes:** 36SI HP (12V) 170A J Mount

### Alternator 36SI



**FortproUSA#:** F235416

**Replaces:** 8600127

**Notes:** 36SI HP (12V) 170A PAD Mount





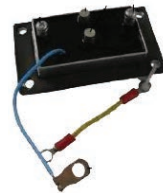
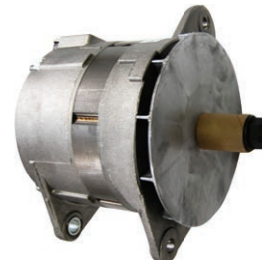
## ELECTRICAL COMPONENTS

### Alternator

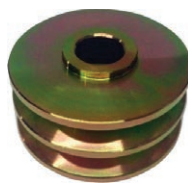
**FortproUSA#: F235402**

**Replaces:** 2526LC, JB2526, 2MJ4112P2

**Notes:** Leece-Neville application 108 amp



FortProUSA#	Description	Replaces	Notes
F235381	Voltage Regulator	1116433	12 volt
F235382	Voltage Regulator	1116405	24 volt
F235404	Leece-Neville	102200	12 volt



FortProUSA#	Replaces	Application	Notes
F235388	Pulley 2 groove STD	1962567	79 mm
F235389	Pulley 2 groove STD	1938553	89 mm
F235390	Pulley 2 groove STD	830279	85 mm
F235391	Pulley 8 groove STD	10474975	70 mm
F235392	Pulley 2 groove STD	C7TZ10344B, E2H210344A, GP485	84 mm





## NOTES:

A series of horizontal dotted lines for taking notes, spanning the width of the page below the "NOTES:" header.





## ELECTRICAL COMPONENTS

### Plug

FortproUSA#: **F235501**

Replaces: 33MR189, 483509C1

Notes: 7 Way



### Socket

FortproUSA#: **F235502**

Replaces: 347SG13, 2030455C1

Notes: 7 Way



### Electric Cable

FortproUSA#: **F235504**

Replaces: 8498-713C

Notes: 15Ft. Working Length, 7 Way



### ABS Electric Cable

FortproUSA#: **F235506**

Replaces: 33MR3189

Notes: ABS 15 Ft. Working Length, 7 Way



## ELECTRICAL COMPONENTS

### 3 in 1 Air Brake & ABS Cable



**FortproUSA#:** F235507

**Replaces:** N/A

**Notes:** ABS 15 Feet working length, 7 way

### SL-4 Stop Light Switch



**FortproUSA#:** F235516

**Replaces:** 1MR2328R, 13250, 171548R91

**Notes:** 1/4 in. PT, normally open (0 psig)  
closes at 4 psig

### SL-4 Stop Light Switch



**FortproUSA#:** F235512

**Replaces:** 1MR3544P2

**Notes:** 1/4 in. PT., normally open (0 psig)  
closes at 5 psig

### SL-4 Stop Light Switch



**FortproUSA#:** F235511

**Replaces:** 228600, 167670161

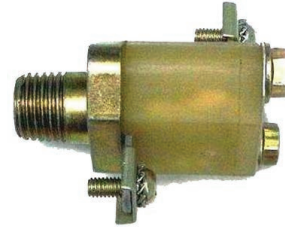
**Notes:** 1/4 in. PT, normally open (0 psig)  
closes at 5 psig



## ELECTRICAL COMPONENTS

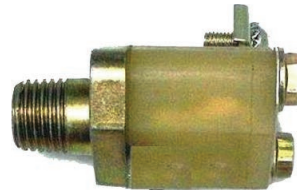
### LP-3 Low Pressure Switch

**FortproUSA#: F235510**  
**Replaces:** 228750, 764370691  
**Notes:** 1/4 in PT, Opens at 66 psig



### LP-3 Low Pressure Switch

**FortproUSA#: F235518**  
**Replaces:** 279416, 167672161  
**Notes:** 1/4 in PT, Opens at 60 psig



### LP-3 Low Pressure Switch

**FortproUSA#: F235517**  
**Replaces:** 1MR2339R  
**Notes:** 1/4 in PT, Opens at 70 psig



### LP-3 Low Pressure Switch

**FortproUSA#: F235514**  
**Replaces:** 275083, 1MR2414  
**Notes:** 1/4 in PT, Opens at 75 psig



## ELECTRICAL COMPONENTS

### LP-3 Low Pressure Switch



FortproUSA#: **F235515**

Replaces: 1MR2415

Notes: 1/4 in PT, Opens at 75 psig

### Relay Switch



FortproUSA#: **F235431**

Replaces: 2MR2014

Notes: 5 Pole Horn and emergency stop relay switch.

### Relay Switch



FortproUSA#: **F235445**

Replaces: 965400001

Notes: 12 volt, 30 amp, 4 pole, plastic bracket

### Relay Switch



FortproUSA#: **F235446**

Replaces: DNI0122

Notes: 12 volt, 70 amp, 4 pole, metal bracket



## ELECTRICAL COMPONENTS

### Micro Relay

FortproUSA#: **F235433**

Replaces: 2026910C1

Notes: 12 volt, 5 pole



### Socket Holder

FortproUSA#: **F235442**

Replaces: N/A

Notes: 4-5 PIN



### Turn Signal Flasher

FortproUSA#: **F235440**

Replaces: HD12

Notes: 2 Term

FortproUSA#: **F235441**

Replaces: HD13

Notes: 3 Term



### Horn Relay

FortproUSA#: **F235420**

Replaces: 2MD2149M

Notes: 5 Pole, Horn, Disable Engine Brake



## ELECTRICAL COMPONENTS

### Turn Signal Flasher



FortproUSA#: **F235443**

Replaces: 44530

Notes: 2 Term, 25 max. amp

### Turn Signal Flasher



FortproUSA#: **F235444**

Replaces: 44540

Notes: 3 Term, 25 max amp

### Temperature Sender

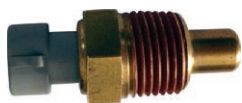


FortproUSA#: **F235380**

Replaces: Q21-1002

Notes: Peterbilt application

### Sensor, Temperature



FortproUSA#: **F235449**

Replaces: 1675751C1

Notes: International application





## ELECTRICAL COMPONENTS

### Reverse Switch

FortproUSA#: **F235447**

Replaces: 1MR2297, 4549561

Notes: Normally open



### Reverse Switch

FortproUSA#: **F235448**

Replaces: 1MR2298

Notes: Normally open



### Ignition Switch

FortproUSA#: **F235438**

Replaces: 1MR3172P2



### Dimmer Switch

FortproUSA#: **F235530**

Replaces: 1MR3198

Notes: Foot push on terminal



## ELECTRICAL COMPONENTS

### Relay Switches



FortproUSA#: **F235425**

Replaces: 2MR377

Notes: 4 Pole continuos, Dynatard

FortproUSA#: **F235426**

Replaces: 2MR350

Notes: 4 Pole continuos, Accessories

### Relay Switches



FortproUSA#: **F235427**

Replaces: 2MR358A

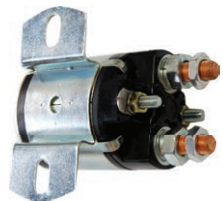
Notes: 4 Terminal, Intermittent, External Ground

FortproUSA#: **F235428**

Replaces: 2MR338, 1693479C91

Notes: 3 Terminal, Intermittent, Internal Ground

### Relay Switches



FortproUSA#: **F235429**

Replaces: 2MR2114

Notes: 4 Pole, Continuos

FortproUSA#: **F235430**

Replaces: 2MR2016

Notes: 3 Pole

### Relay Switches



FortproUSA#: **F235432**

Replaces: EL000200, 24059

Notes: 4 Pole, Continuos


FortproUSA#: **F235434**


Replaces: EL000202, 24106


Notes: 3 Pole




## ELECTRICAL COMPONENTS

<b>FortproUSA#: F235540</b>	<b>Toggle Switches</b>
<b>Replaces:</b> 1MR3410	
<b>Notes:</b> Headlight Switch, 3 Positions, 6 Term (Push Connection)	
<b>FortproUSA#: F235534</b>	
<b>Replaces:</b> 1MR3165P2	
<b>Notes:</b> 3 Positions, 6 Term (Screw Connection)	

	<b>Toggle Switches</b>
<b>FortproUSA#: F235535</b>	
<b>Replaces:</b> 1MR3165P1	
<b>Notes:</b> 2 Positions, 2 Term (Screw Connection)	

<b>FortproUSA#: F235537</b>	<b>Toggle Switches</b>
<b>Replaces:</b> 1MR3410P2	
<b>Notes:</b> 2 Positions, 3 Term (Push Connection)	
<b>FortproUSA#: F235538</b>	
<b>Replaces:</b> 1MR3165P4	
<b>Notes:</b> 2 Positions, 3 Term (Screw Connection)	

<b>FortproUSA#: F235542</b>	<b>Toggle Switches</b>
<b>Replaces:</b> 1MR3380	
<b>Notes:</b> 2 Positions, 6 Term (Momentary) (Push Connection)	
<b>FortproUSA#: F235536</b>	
<b>Replaces:</b> 1MR2176A	
<b>Notes:</b> 2 Positions, 6 Term (Momentary) (Screw Connection)	



## ELECTRICAL COMPONENTS

### Universal



FortproUSA#: **F235531**

Notes: F48532 Universal Switch with Harness

### TEMPERATURE SENSORS



FortProUSA#	OEM	Application	Description
<b>F238801</b>	4076493	CUMMINS L10,M11,ISM,ISX	SENSOR, AMBIENT AIR
<b>F238802</b>	23527830	DETROIT SERIES 60	SENSOR, COOLANT /OIL TEMPERATURE
<b>F238803</b>	3408345	CUMMINS	SENSOR, TEMPERATURE
<b>F238804</b>	4088832	CUMMINS	SENSOR, TEMPERATURE
<b>F238805</b>	4928594	CUMMINS	SENSOR, TEMPERATURE
<b>F238806</b>	1889995C91	NAVISTAR	SENSOR, TEMPERATURE
<b>F238807</b>	3865346	CUMMINS ISX	SENSOR, TEMPERATURE
<b>F238808</b>	3085185	CUMMINSL10, M11, ISM, N14	SENSOR, TEMPERATURE
<b>F238809</b>	3865312	CUMMINSL10, M11, ISM, N14	SENSOR, TEMPERATURE
<b>F238810</b>	23514708	DETROIT SERIES 60	SENSOR, TEMPERATURE
<b>F238811</b>	23515250	DETROIT SERIES 60	SENSOR, TEMPERATURE
<b>F238812</b>	23515251	DETROIT SERIES 60	SENSOR, TEMPERATURE
<b>F238813</b>	23518092	DETROIT SERIES 60	SENSOR, TEMPERATURE
<b>F238814</b>	22-54800-000	FREIGHTLINER	SENSOR, TEMPERATURE
<b>F238815</b>	1675751C1	NAVISTAR	SENSOR, TEMPERATURE
<b>F238816</b>	479758C1	NAVISTAR	SENSOR, TEMPERATURE
<b>F238817</b>	20513340	MACK	SENSOR, TEMPERATURE



## ELECTRICAL COMPONENTS


### PRESSURE SENSORS

FortProUSA#	OEM	Application	Description
<b>F238818</b>	4921493	CUMMINS ISM	SENSOR PRESSURE
<b>F238819</b>	1840078C1	NAVISTAR	SENSOR PRESSURE
<b>F238820</b>	22329559	MACK	SENSOR, BOOST PRESSURE
<b>F238821</b>	4928593	CUMMINS ISX ISM ISL	SENSOR, MANIFOLD DUAL PRESSURE
<b>F238822</b>	20706889	MACK/VOLVO	SENSOR, MANIFOLD PRESSURE MAP
<b>F238823</b>	4921517	CUMMINS ISX ISM	SENSOR, OIL PRESSURE
<b>F238824</b>	4921487	CUMMINS	SENSOR, OIL PRESSURE
<b>F238825</b>	3962893	MACK	SENSOR, OIL PRESSURE
<b>F238826</b>	1077574	VOLVO	SENSOR, PRESSURE
<b>F238827</b>	4921501	CUMMINS	SENSOR, PRESSURE
<b>F238828</b>	4921497	CUMMINS	SENSOR, PRESSURE
<b>F238829</b>	4921499	CUMMINS ISX	SENSOR, FUEL PRESSURE
<b>F238830</b>	20898038	MACK	SENSOR, FUEL PRESSURE
<b>F238831</b>	1830669C92	NAVISTAR	SENSOR, INJECTOR PRESSURE
<b>F238832</b>	23527828	DETROIT DIESEL	SENSOR, OIL PRESSURE
<b>F238833</b>	23532797	DETROIT DIESEL	SENSOR, OIL PRESSURE
<b>F238834</b>	1807369C2	NAVISTAR	SENSOR, OIL PRESSURE
<b>F238835</b>	21746206	MACK	SENSOR, OIL PRESSURE
<b>F238836</b>	64MT2114	MACK	SENSOR, OIL PRESSURE
<b>F238837</b>	23527829	DETROIT DIESEL	SENSOR, PRESSURE BOOST



## ELECTRICAL COMPONENTS

### SPEED SENSORS



FortProUSA#	OEM	Application	Description
<b>F238838</b>	22387296	MACK/VOLVO	SENSOR, SPEED
<b>F238839</b>	Q21-6005	KENWORTH, PETERBILT	SENSOR, SPEED
<b>F238840</b>	SAA85920038	FREIGHTLINER	SENSOR, SPEED
<b>F238841</b>	1658556C91	NAVISTAR	SENSOR, DUAL SPEEDOMETER
<b>F238842</b>	2454630	CATERPILLAR	SENSOR, SPEED(DUAL)
<b>F238843</b>	20508011	MACK/VOLVO	SENSOR, SPEED / FLYWHEEL
<b>F238844</b>	7660-990K	MACK	SENSOR, SPEEDOMETER
<b>F238845</b>	2503117C1	NAVISTAR	SENSOR, SPEEDOMETER
<b>F238846</b>	3528003C1	NAVISTAR	SENSOR, SPEEDOMETER
<b>F238847</b>	64MT416	MACK	SENSOR, SPEEDOMETER
<b>F238848</b>	64MT439M	MACK/VOLVO	SENSOR, SPEEDOMETER
<b>F238849</b>	K3454	KENWORTH/PETER- BILT	SENSOR, SPEEDOMETER(2PIN)
<b>F238850</b>	K3455	KENWORTH/PETER- BILT	SENSOR, SPEEDOMETER(4PIN)
<b>F238851</b>	64MT412M	MACK	SENSOR, SPEEDOMETER/ TACHOMETER
<b>F238852</b>	64MT435	MACK	SENSOR, SPEEDOMETER/ TACHOMETER
<b>F238853</b>	8029939	MACK/VOLVO	SENSOR, SPEEDOMETER/ TACHOMETER
<b>F238854</b>	64MT348M	MACK	SENSOR, TACHOMETER
<b>F238855</b>	64MT440M	MACK	SENSOR, TACHOMETER
<b>F238856</b>	556915C91	NAVISTAR	SENSOR, TACHOMETER
<b>F238857</b>	20513343	MACK	SENSOR, TACHOMETER



## ELECTRICAL COMPONENTS

### LEVEL SENSORS

FortProUSA#	OEM	Application	Description
<b>F238858</b>	23503510	DETROIT SERIES 60	SENSOR, COOLANT LEVEL
<b>F238859</b>	22807993	MACK/VOLVO	SENSOR, OIL LEVEL
<b>F238860</b>	20900982	MACK	SENSOR, COOLANT LEVEL
<b>F238861</b>	21399626	MACK	SENSOR, COOLANT LEVEL
<b>F238862</b>	23520380	DETROIT SERIES 60	SENSOR, COOLANT LEVEL
<b>F238863</b>	23522855	DETROIT DIESEL	SENSOR, COOLANT LEVEL
<b>F238864</b>	4903489	CUMMINS	SENSOR, COOLANT LEVEL
<b>F238865</b>	64MT466	MACK	SENSOR, COOLANT LEVEL
<b>F238866</b>	64MT299M	MACK	SENSOR, COOLANT LEVEL
<b>F238867</b>	06-62384-002	FREIGHTLINER	SENSOR, LEVEL COOLANT
<b>F238868</b>	21521353	MACK	SENSOR, OIL LEVEL



## ELECTRICAL COMPONENTS

### POSITION SENSORS



FortProUSA#	OEM	Application	Description
<b>F238869</b>	23527338	DETROIT DIESEL	SENSOR, CAMSHAFT
<b>F238870</b>	1876735C91	NAVISTAR	SENSOR, CAMSHAFT
<b>F238871</b>	1876736C91	NAVISTAR	SENSOR, CAMSHAFT
<b>F238872</b>	1885812C91	NAVISTAR	SENSOR, CAMSHAFT
<b>F238873</b>	3408503	CUMMINS L10, M11, N14, ISM	SENSOR, CAMSHAFT/CRANKSHAFT
<b>F238874</b>	4921597	CUMMINS	SENSOR, CAMSHAFT/CRANKSHAFT
<b>F238875</b>	4921599	CUMMINS	SENSOR, CAMSHAFT/CRANKSHAFT
<b>F238876</b>	1828345C91	NAVISTAR	SENSOR, CAMSHAFT/CRANKSHAFT
<b>F238877</b>	2872277	CUMMINS	SENSOR, CRANKSHAFT/CAMSHAFT
<b>F238878</b>	2872279	CUMMINS	SENSOR, POSITION
<b>F238879</b>	20562642	MACK/VOLVO	SENSOR, POSITION
<b>F238880</b>	8929388	DETROIT SERIES 60	SENSOR, CRANKSHAFT
<b>F238881</b>	23527339	DETROIT DIESEL	SENSOR, CRANKSHAFT





## ELECTRICAL COMPONENTS

### OTHER SENSORS

FortProUSA#	OEM	Application	Description
<b>F238882</b>	993619, 993616	MACK	FAN SWITCH (1/2IN THREAD) DUAL NC/NO 185 DEG
<b>F238883</b>	993605, 1685132C92	MACK, NAVISTAR	FAN SWITCH (1/2IN THREAD) DUAL NC/NO 195 DEG
<b>F238884</b>	4984575	CUMMINS	SENSOR BREATHER
<b>F238885</b>	4921473	CUMMINS	SENSOR PRESSURE / TEMPERATURE
<b>F238886</b>	3331044	CUMMINS	SENSOR, AMBIENT AIR
<b>F238887</b>	4902720	CUMMINS N14	SENSOR, AMBIENT AIR
<b>F238888</b>	4921475	CUMMINS ISX	SENSOR, DUAL PRESSURE TEMPERATURE
<b>F238889</b>	4921477	CUMMINS	SENSOR, DUAL PRESSURE TEMPERATURE
<b>F238890</b>	2897333	CUMMINS	SENSOR, DUAL PRESSURE / TEMPERATURE
<b>F238891</b>	4921483	CUMMINS	SENSOR, DUAL PRESSURE / TEMPERATURE
<b>F238892</b>	8929387	DETROIT DIESEL	SENSOR, IDLER
<b>F238893</b>	23528418	DETROIT DIESEL 60	SENSOR, MAP
<b>F238894</b>	64MT2105M	MACK	SENSOR, ENGINE TIMING EVENT



### PRESSURE SWITCH

FortProUSA#	OEM	Application	Description
<b>F238895</b>	3408607	CUMMINS	SWITCH, OIL PRESSURE
<b>F238896</b>	1831259C91	NAVISTAR	SWITCH, OIL PRESSURE
<b>F238897</b>	2035006C2	NAVISTAR	SWITCH, PARKING BREAK N.O.
<b>F238898</b>	2035007C2	NAVISTAR	SWITCH, PARKING BRAKE LIGHT N.C.



## ELECTRICAL COMPONENTS

### ANTI-LOCK BRAKE SYSTEM (ABS) SENSORS KITS



FortProUSA#	OEM	Application	Description
<b>F238899</b>	R955342, AL10271915, 364094061	Freightliner, Hino, Mack, Navistar, Paccar, Volvo	ABS sensor With 79" Cable Length
<b>F238900</b>	R955338, 4410324440	Freightliner, Mack, Navistar, Volvo	ABS sensor With 69" Cable Length
<b>F238901</b>	R955341, 4410328130	Ford, Freightliner, Hino, Mack, Navistar, Volvo	ABS sensor With 67" Cable Length
<b>F238902</b>	R955328, 4410321030	Freightliner, Mack, Navistar, Volvo	ABS sensor With 69" Cable Length
<b>F238903</b>	R955329, 4410329190	Freightliner, Mack, Navistar, Volvo	ABS sensor With 69" Cable Length
<b>F238904</b>	R955336, 4410328090, 8001709	Freightliner, Mack, Navistar, Volvo,	ABS sensor With 39" Cable Length
<b>F238905</b>	801538, 300084	Freightliner, Mack, Navistar, Paccar, Volvo	ABS sensor With 76" Cable Length
<b>F238906</b>	801542	Freightliner, Mack, Navistar, Volvo	ABS sensor With 79" Cable Length
<b>F238907</b>	065640, 801543	Freightliner, Mack, Navistar, Paccar, Volvo	ABS sensor With 66" Cable Length
<b>F238908</b>	4410321840	Freightliner, Navistar	ABS sensor With 79" Cable Length
<b>F238909</b>	4410321850	Freightliner, Navistar	ABS sensor With 67" Cable Length
<b>F238910</b>	R955337	Freightliner, Mack, Navistar, Paccar, Volvo	ABS sensor With 67" Cable Length
<b>F238911</b>	AL10271914, 364094001	Freightliner, Mack, Navistar, Volvo	ABS sensor With 20" Cable Length
<b>F238912</b>	801546	Ford, Freightliner, Mack, Navistar, Volvo	ABS sensor With 63" Cable Length
<b>F238913</b>	801552, 065502	Ford, Freightliner, Mack, Navistar, Volvo	ABS sensor With 78" Cable Length
<b>F238914</b>	800717	Ford, Freightliner, Mack, Navistar, Volvo	ABS sensor With 43" Cable Length
<b>F238915</b>	300083, 801544	Freightliner, Mack, Navistar, Volvo	ABS sensor With 15" Cable Length
<b>F238916</b>	801553	Ford, Freightliner, Mack, Navistar, Volvo	ABS sensor With 43" Cable Length
<b>F238917</b>	065324, 801550	Ford, Freightliner, Mack, Navistar, Volvo	ABS sensor With 78" Cable Length



## ELECTRICAL COMPONENTS

### ANTI-LOCK BRAKE SYSTEM (ABS) SENSORS KITS

FortProUSA#	OEM	Application	Description
<b>F238918</b>	801551, 065528	Ford, Freightliner, Mack, Navistar, Volvo	ABS sensor With 43" Cable Length
<b>F238919</b>	800715, 800715, 065368	Ford, Freightliner, Mack, Navistar, Volvo	ABS sensor With 63" Cable Length
<b>F238920</b>	R955349	Freightliner, Mack, Navistar, Paccar, Volvo	ABS sensor With 81" Cable Length
<b>F238921</b>	801563	Ford, Freightliner, Mack, Navistar, Volvo	ABS sensor With 63" Cable Length
<b>F238922</b>	800198, 801548	Ford, Freightliner, Mack, Navistar, Volvo	ABS sensor With 50" Cable Length
<b>F238923</b>	AL364062	Freightliner, Mack, Navistar, Volvo	ABS sensor With 98" Cable Length
<b>F238924</b>	AL1027197, 364528011	Freightliner, Mack, Volvo	ABS sensor With 79" Cable Length
<b>F238925</b>	801541, 800109, 55032, 300150	Freightliner, Mack, Navistar, Volvo	ABS sensor With 66" Cable Length
<b>F238926</b>	AL1027196, 36452001	Freightliner, Mack, Volvo	ABS sensor With 20" Cable Length



The logo for Fortpro USA is centered within a white oval. It features a stylized icon of three horizontal bars on the left, followed by the word "FORTPRO" in a bold, italicized, sans-serif font. A registered trademark symbol (®) is positioned to the upper right of "FORTPRO". Below the main text, the word "USA" is written in a smaller, blue, sans-serif font, underlined by a thin blue horizontal line.

**FORTPRO<sup>®</sup>**  
**USA**

**Now you can order online**

**[www.fortprousa.com](http://www.fortprousa.com)**

